



SAN JOSE WATER

Environmental Management Stewardship & Sustainability

Presented By: Jared Lewis

PRESENTER



**Jared Lewis • Manager, Environmental
Planning and Natural Resources**

WEBINAR AGENDA

1

Program Context

Environment and Commitments

2

Focus Areas

Overview

3

Key Drivers

Actions and Rationale

4

Questions

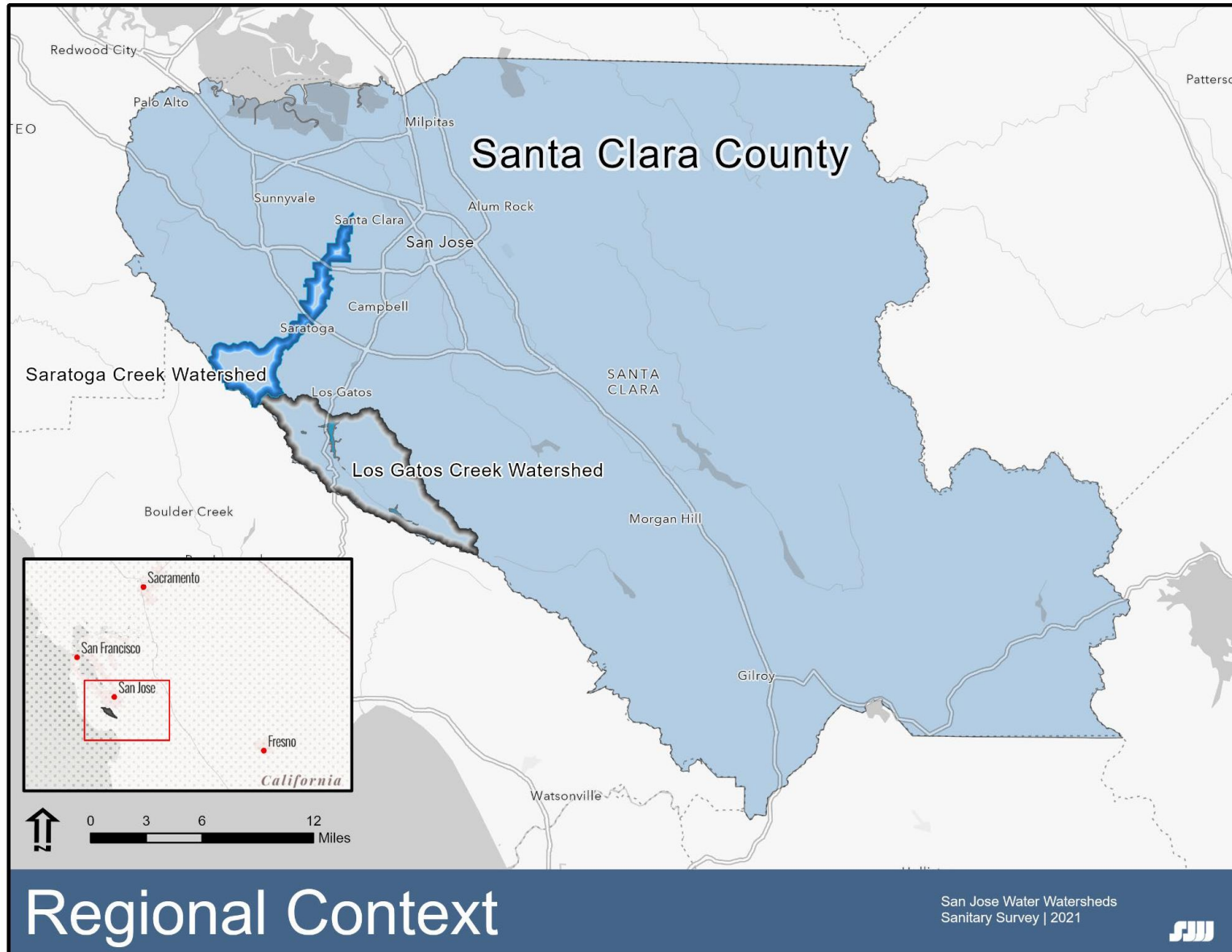
Discussion, Questions,
Comments

Program Context

Water/Stewardship Nexus

- Source of Supply
- Natural Resources
- Programs, Policies, Partnerships

MAP 1 – REGIONAL CONTEXT



Regional Context



The responsible use and protection of the natural environment through conservation and sustainable practices to enhance ecosystem resilience and human well-being.

- Chapin et al., 2010-

Co-equal Goals

- Ecological sustainability
- Biological resource protection
- Resiliency and adaptation
- Ecosystem services
- High-quality water



Focus Areas



CLIMATE ADAPTATION

Reduce vulnerability to climate impacts such as drought, flooding and wildfire.



WILDFIRE RESILIENCY

Protect infrastructure and natural resources, and prevent water supply disruptions during and after wildfires.



ENVIRONMENTAL WATER

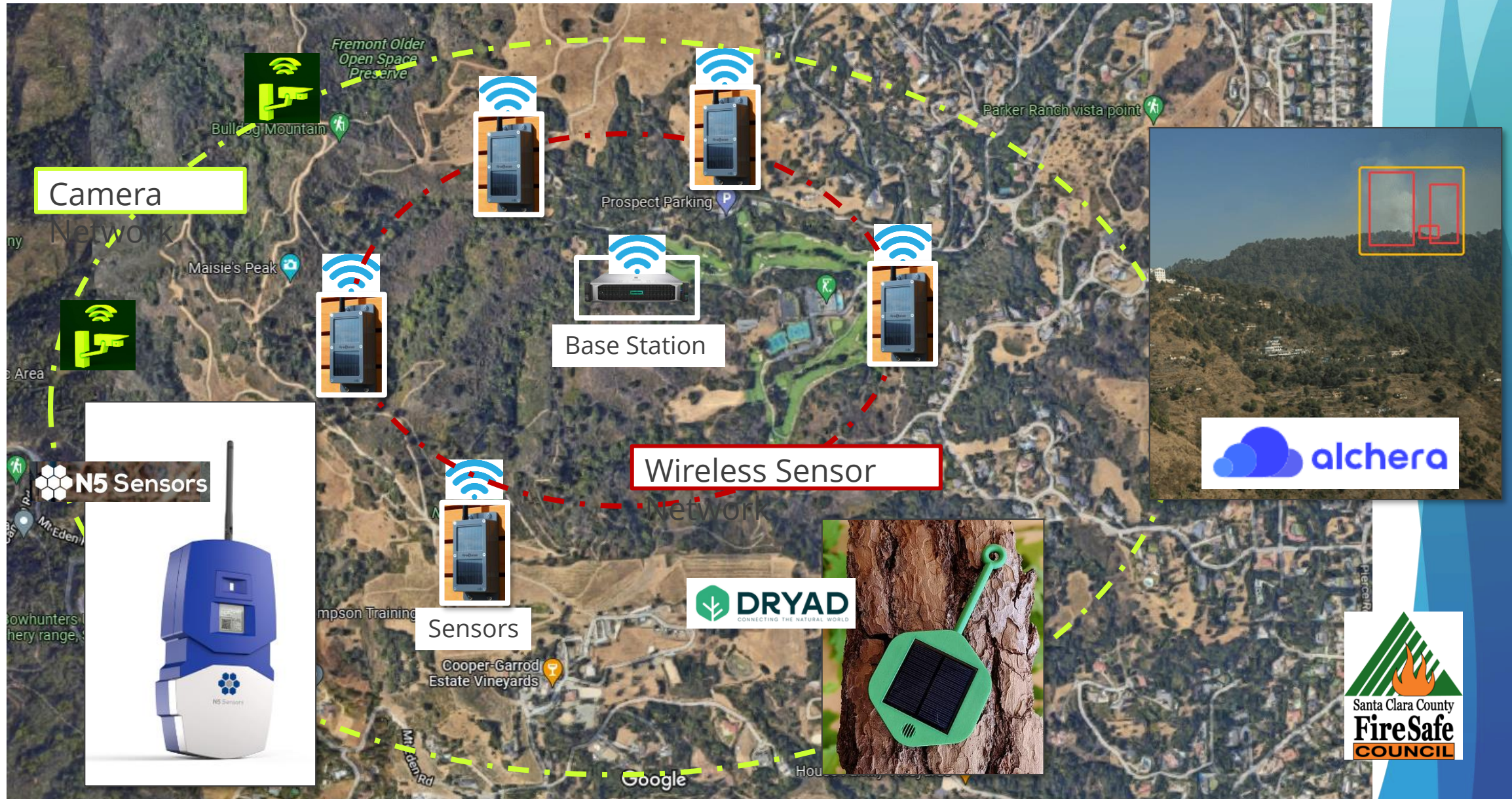
Ensure long-term sustainability of water supply and support the health of local ecosystems.



ECOSYSTEM MANAGEMENT

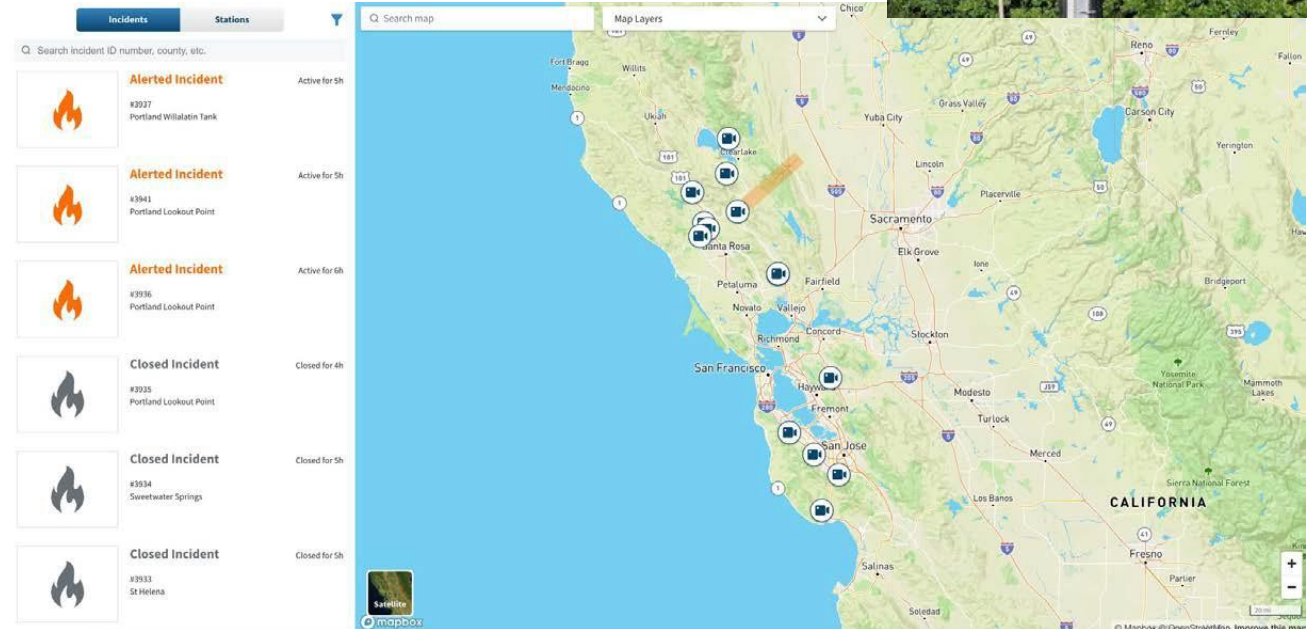
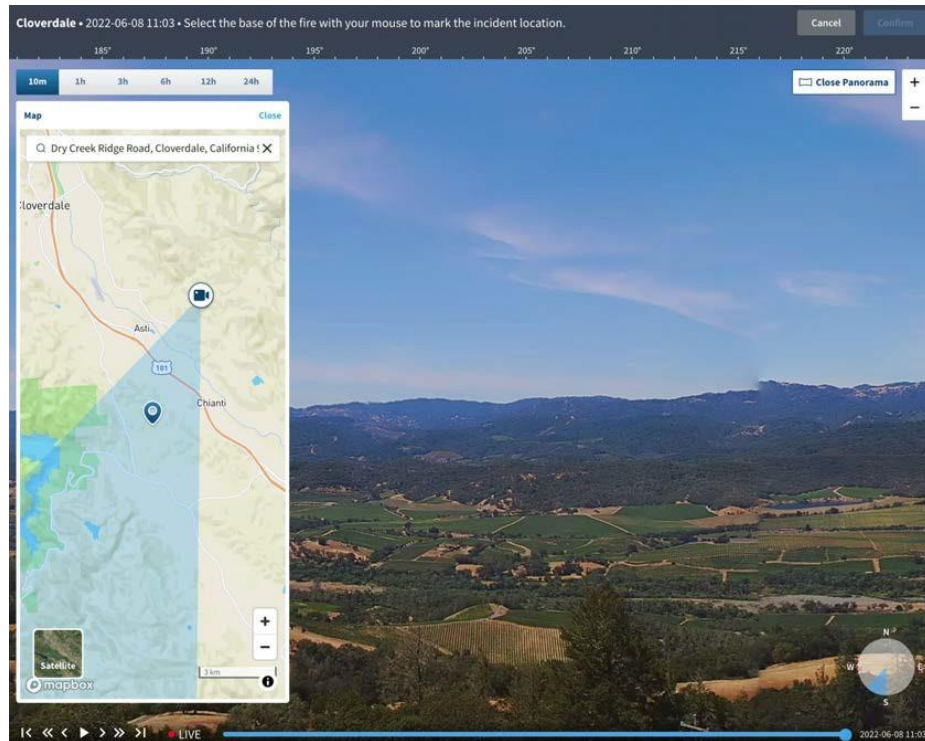
Provide ecological benefits, water quality improvement, carbon sequestration, and recreational opportunities.

Early Warning Wildfire Detection Network



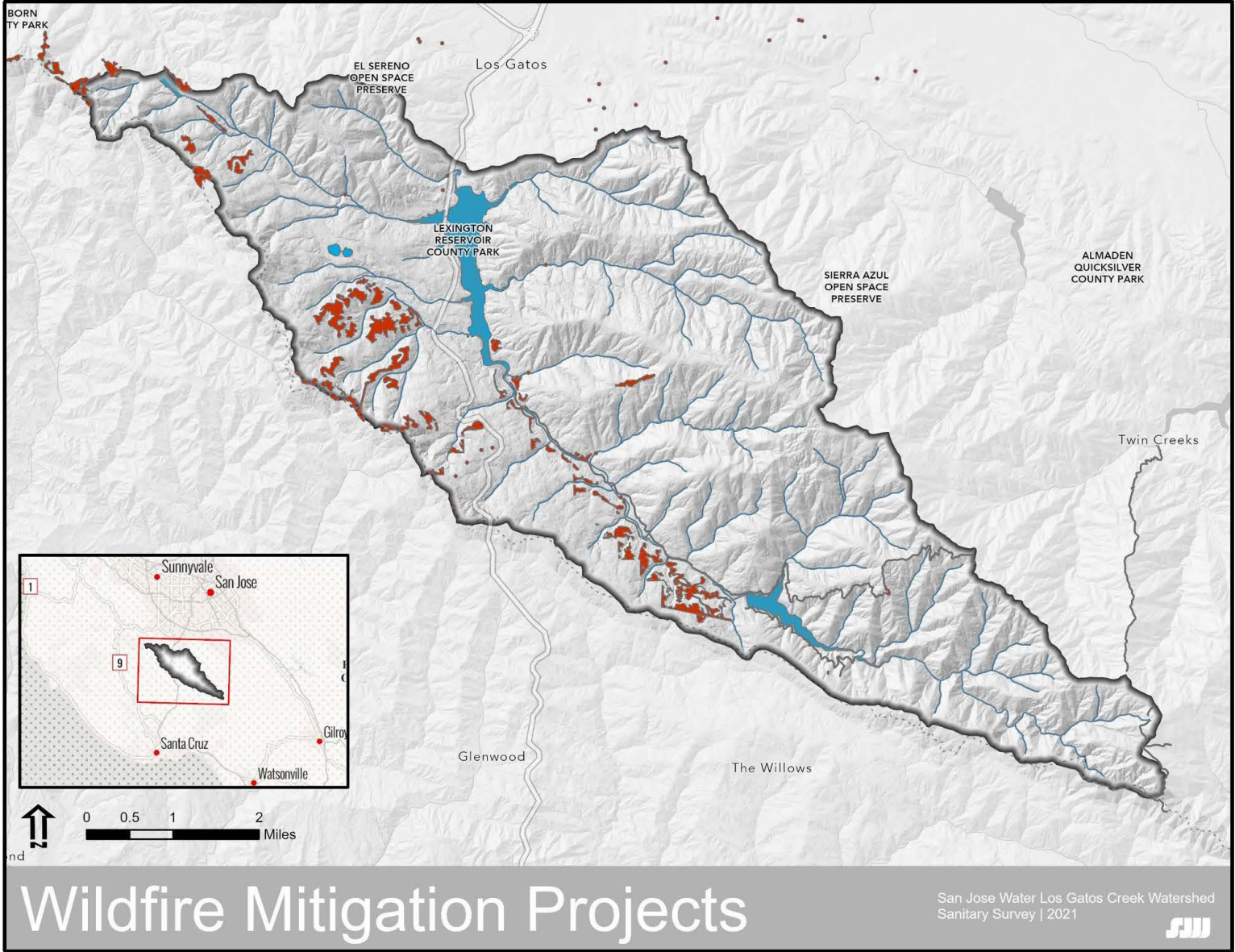
Wildfire Camera Network

Automated detection, notification and monitoring of wildfire at the regional scale.



Forest Health Program

MAP 18 – WILDFIRE MITIGATION PROJECTS (LOS GATOS CREEK WATERSHED)



Ecological Restoration

Ecological restoration projects are conducted across the watershed to **improve habitat and restore/support natural ecological processes.** Projects include invasive plant removal, tree planting, habitat creation.



Key Drivers

Conservation



1

PROTECTED LANDS

Ensuring long-term stewardship of natural and cultural resources by maintaining permanent buffers and watershed protection measures.

2

LINKAGES

Creating, enhancing and protecting wildlife corridors and key linkages across the landscape.

3

SCIENCE

Applying a science-based management and decision-making framework.

Biodiversity



1

NATIVE SPECIES

Promoting native and endemic species and conditions allowing them to persist.

2

RARE HABITATS

Enhancing and protecting rare habitats to increase resilience to climate change.

3

LANDSCAPE-SCALE

Increasing biodiversity across the landscape and at appreciable scale.

Water Quality



1

SOURCE

Protecting water quality at its source.

2

PHYSICAL PROPERTIES

Ensuring that physical water quality parameters are consistent and high-quality.

3

WATERSHED

Connecting watershed management activities to water quality objectives.

Water Supply



1

RELIABILITY

Ensuring reliability of water supply for over 1-million Santa Clara County residents.

2

SUSTAINABILITY

Managing water resources sustainably for future generations and for non-human stakeholders (e.g., plants, wildlife, fish).

3

YIELD

Maximizing the amount of water produced from the watershed through integrated watershed management practices.

Forest Health



1

FUNCTION

Objectives focus on ecological context and functional objectives.

2

COMPOSITION

Restoration of historical analogues and climate resilient ecotypes.

3

ECOSYSTEM SERVICES

Emphasize provision of ecological services and benefits to people and communities.

Wildfire Mitigation



[This Photo](#) by Unknown Author is licensed under [CC BY-NC-ND](#)

1

ENVIRONMENTALLY SENSITIVE

Treatments are ecological and environmentally sensitive.

2

COLLABORATIVE

Work is highly collaborative and includes multiple partners and stakeholder input.

3

SCIENCE-BASED

Informed by science and leading-edge data and modeling support.

Thank You!

PLEASE complete the survey when
you exit the webinar for a chance
to win a **Starbucks gift card**.

CONTACT US



PHONE

Phone : (408) 345-1911



ADDRESS

1221 A South Bascom Ave.
San Jose, CA 95123



EMAIL

jared.lewis@sjwater.com