



SAN JOSE
WATER

ConnecticutWater

Emergency Preparedness Webinar



Presenters



Jim Wollbrinck

Director of Emergency
Management and
Business Resiliency



Don Schumacher, CPP

Lead Superintendent



Agenda

- Overview of San Jose Water (SJW) & Connecticut Water (CWC) Systems
- Emergency Management
 - How we prepare
 - How you can prepare
- Q&A



Emergency Management

What is Emergency Management? Our Mission



Protecting our People



Protecting our Customers



Protecting Water Supply

History of SJW

Incorporated 1866

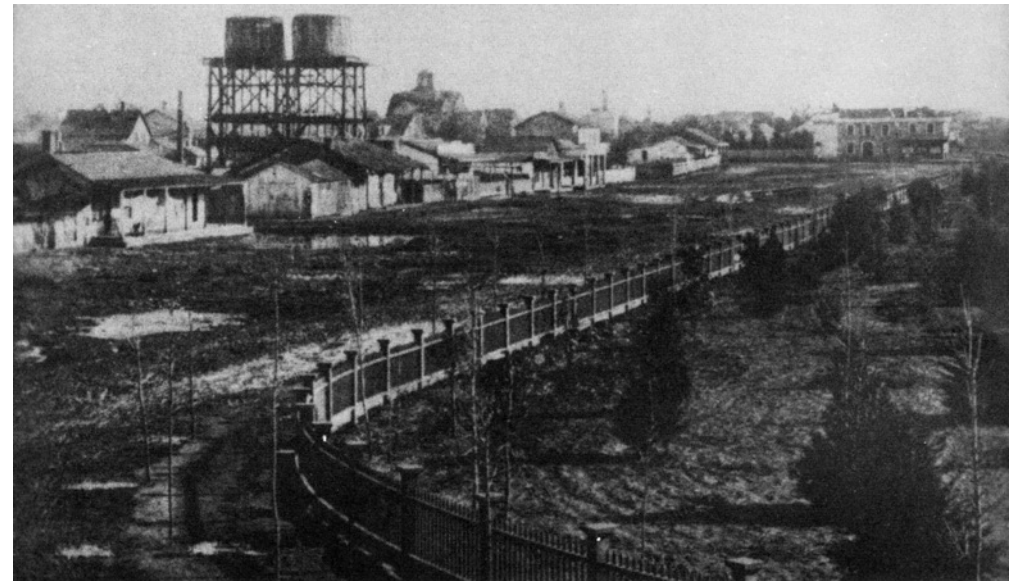
230,000 service connections

Serves population of **1M+**

6 Cities/Towns

346 Employees

\$100M/year in infrastructure



The SJW System

2,400 miles of pipelines

Diverse Water Supply

5 Surface Water Treatment Plants

SJW = 2

Valley Water = 3

120+ Groundwater wells



History of CWC



Incorporated in **1956**

Dates back to late **1849**

105,000 service connections

Serves population of **350,000**

60 Towns

200 Employees

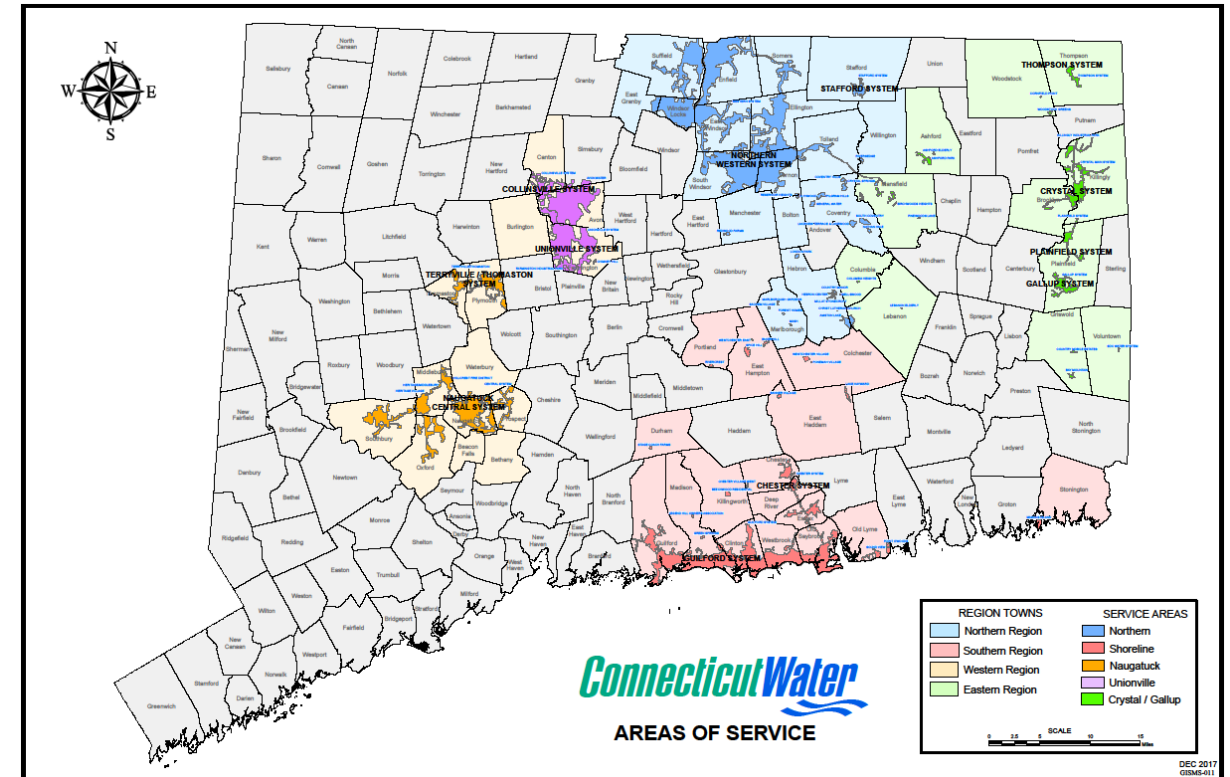
\$900M of infrastructure in CT

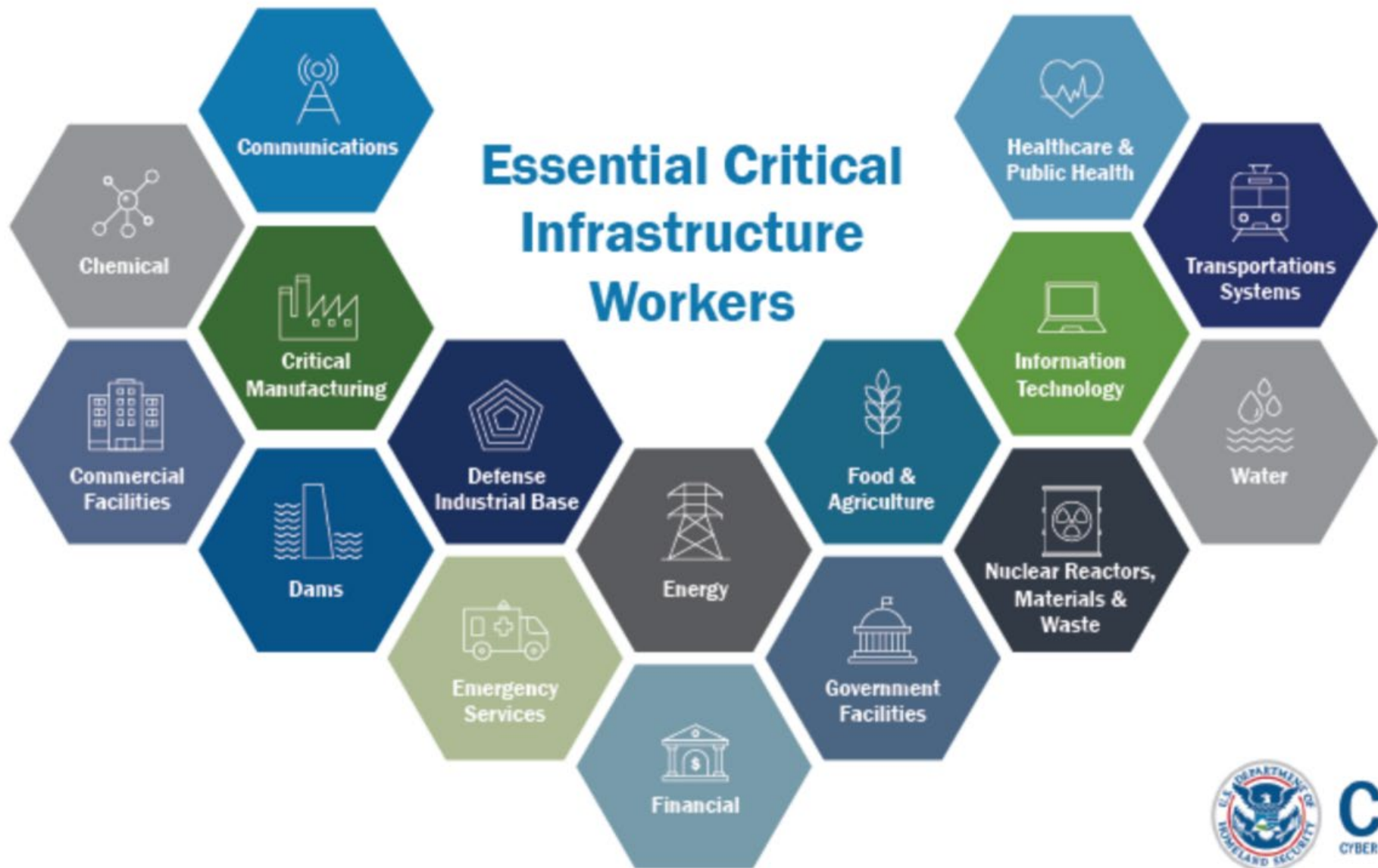


The CWC System



Distributed Water System
1742 Miles of Water Main
60 Separate Public Water Systems
1 Wastewater System
20 Contract Operated Systems
5 Surface Water Treatment Plants
208 Wells



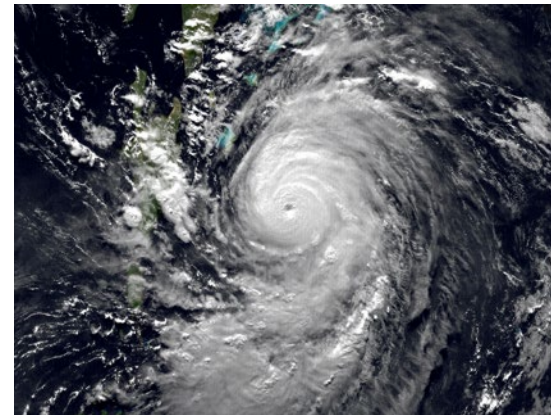


CISA
CYBER+INFRASTRUCTURE

Critical Infrastructure Web



Impactful Events



America's Water Infrastructure Act (AWIA)

Risk and Resiliency Assessments

Internal Risks

- Robust Maintenance
- Capital Improvement

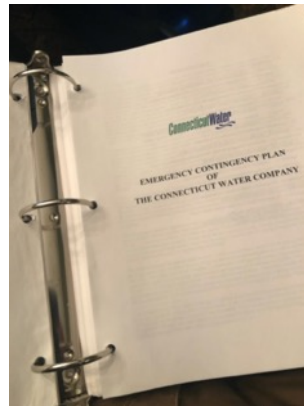
External Risks

- Natural Disasters
- Man-made
- Cyber Threats

Emergency Response Plan



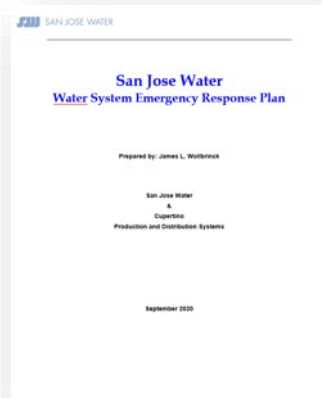
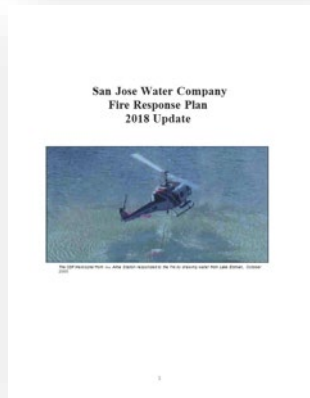
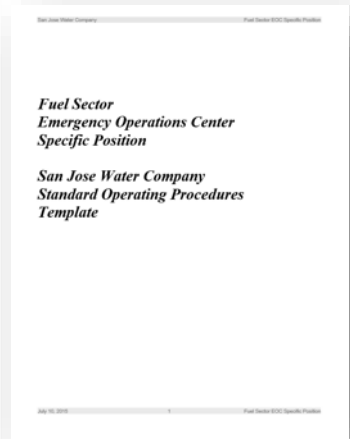
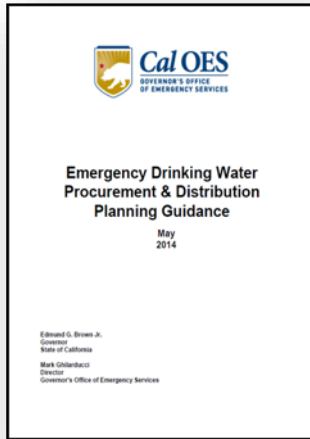
Planning



Responsive Mitigation

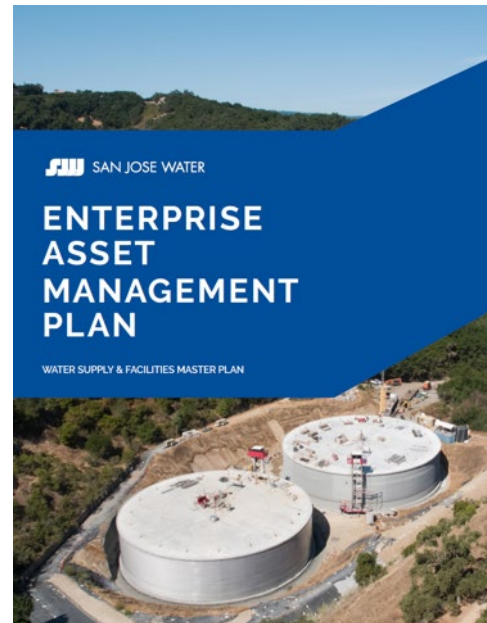


Planning



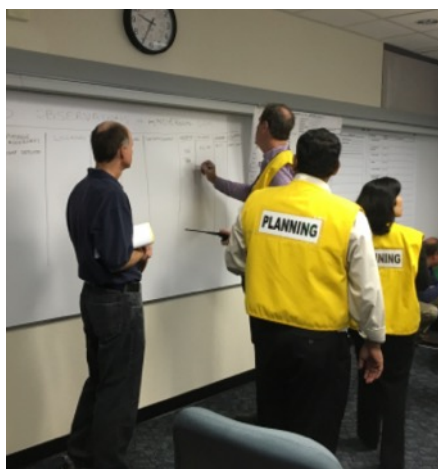
Responsive Mitigation

- Asset Management
- Capital Improvement



SJW Exercises - 2006 to Present

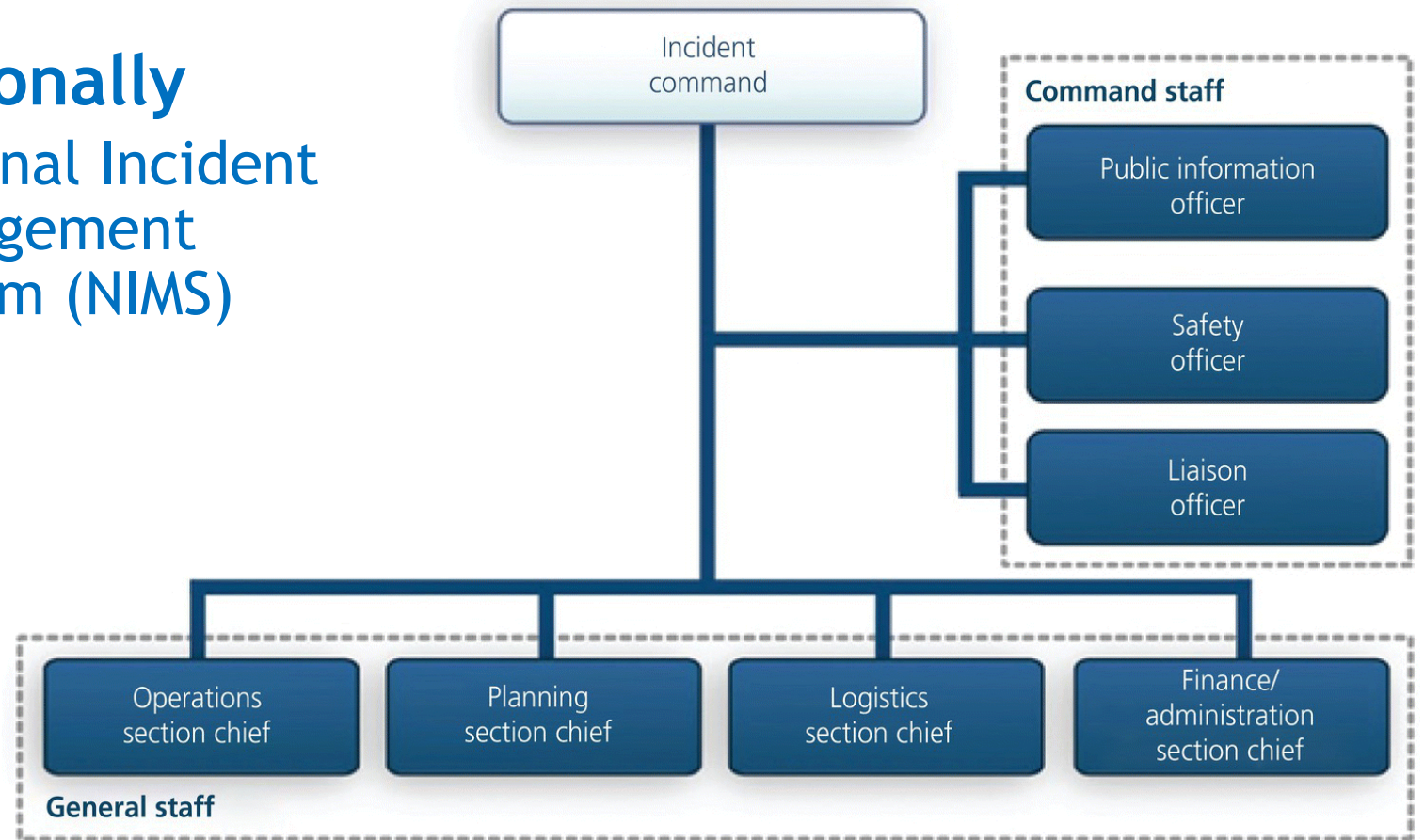
- Tabletop Exercise
- Functional Exercise
- Full Scale Exercise



Local vs National Approaches

California
Standardized
Emergency
Management
System (SEMS)

Nationally
National Incident
Management
System (NIMS)



Partners in Planning and Response

National



State



Local



Multi-Agency Emergency Drinking Water Guidance

Post-Earthquake

Collaboration of State, Local Agencies and Water Utilities

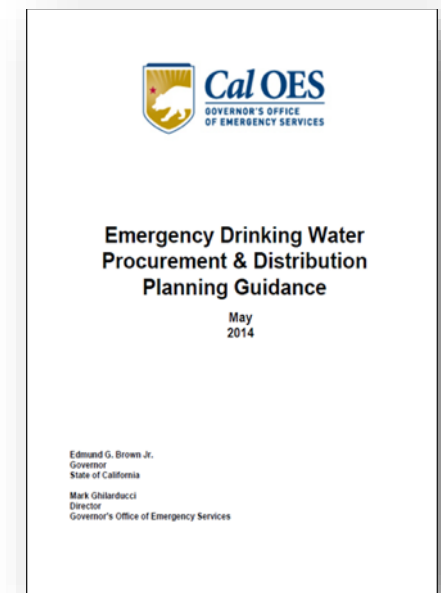
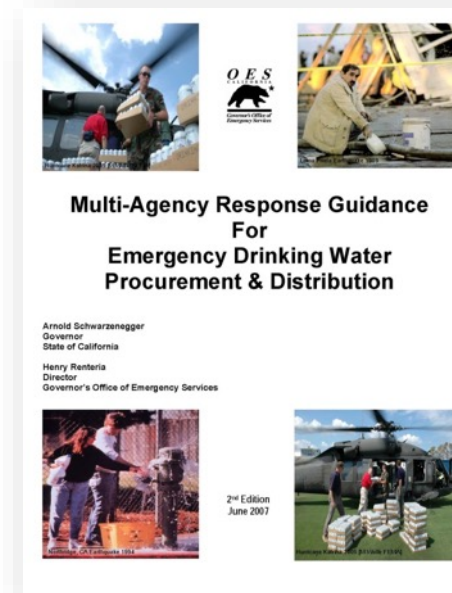
Developed process

Identify water need

Identify process for requesting support

Identify need for Points of Distribution

Recognize the collaboration required



What Can You Do?

1. Visit www.ready.gov
2. Prepare: respond vs react
3. Have a plan
 - Minimum 1 gallon per person per day, minimum 3 days
4. How to shut off water
5. How to purify water



Shutting off Water

1. **Find the shut-off valve for the main water line that enters your house and tag it for easy identification. Make sure everyone in your household knows where it is.**
2. **Shut the valve off completely. Your valve may be rusted open or it may not close all the way. If so, replace it.**
3. **After an earthquake or major freeze, water lines in and around your house could break. Be prepared to take action.**



Purifying Water

Boiling

- Bring to a rolling boil for 1 minute

Chlorination

- Add 1/8 teaspoon bleach per gallon
- Stir and let stand for 30 minutes



Basic Disaster Supply Kit

- Water for x days
- Food for 3 days
- Battery-powered radio
- Flashlight
- First aid kit
- Extra batteries
- Medications/glasses
- Important documents
- Fire extinguisher



Update Your Contact Info!

San Jose Water

www.sjwater.com

408-279-7900

customer.service@sjwater.com

Connecticut Water

www.ctwater.com

1-800-286-5700

customerservice@ctwater.com

Follow us on social media:



@sjwater

@ctwater



@sjwaterco

@ctwater

Contact



Jim Wollbrinck

Director of Emergency Management
and Business Resiliency, SJW

jim.wollbrinck@sjwater.com



Don Schumacher, CPP

Lead Superintendent, CWC

dschumacher@ctwater.com

www.emergencypreparedness.com