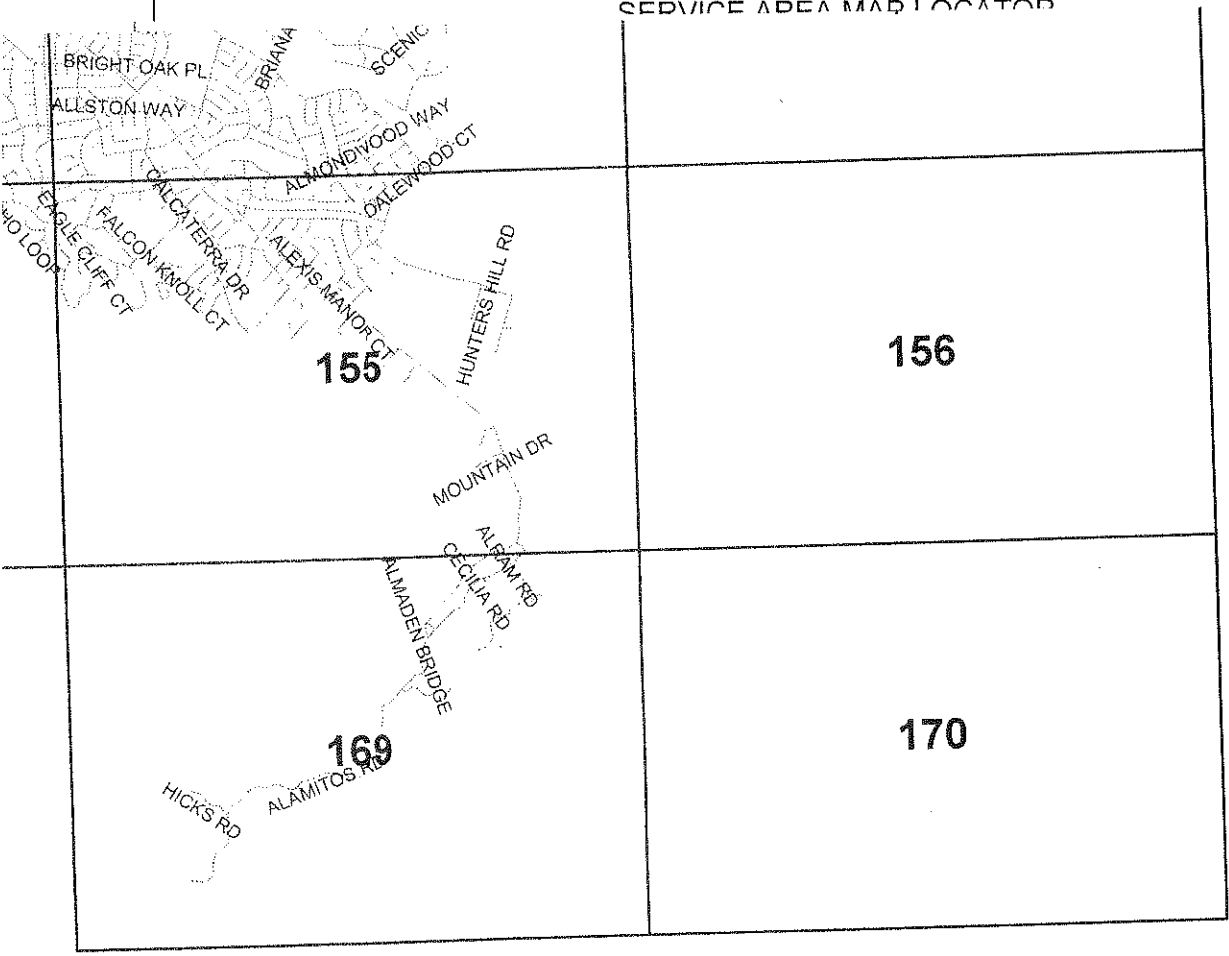


SAN JOSE WATER COMPANY
SERVICE AREA MAP LOCATOR



Area Map Locator

ADVICE LETTER
NUMBER 371
October 16, 2006



Scale = 1 : 60,055

Created by: Fernando Mutia
07/24/2006
\\geoflare\projects\water services\2006\service area map locator.gws
Modified: 10/13/2007

Advice No. 371

Palle Jensen

Date Filed OCT 17 2006

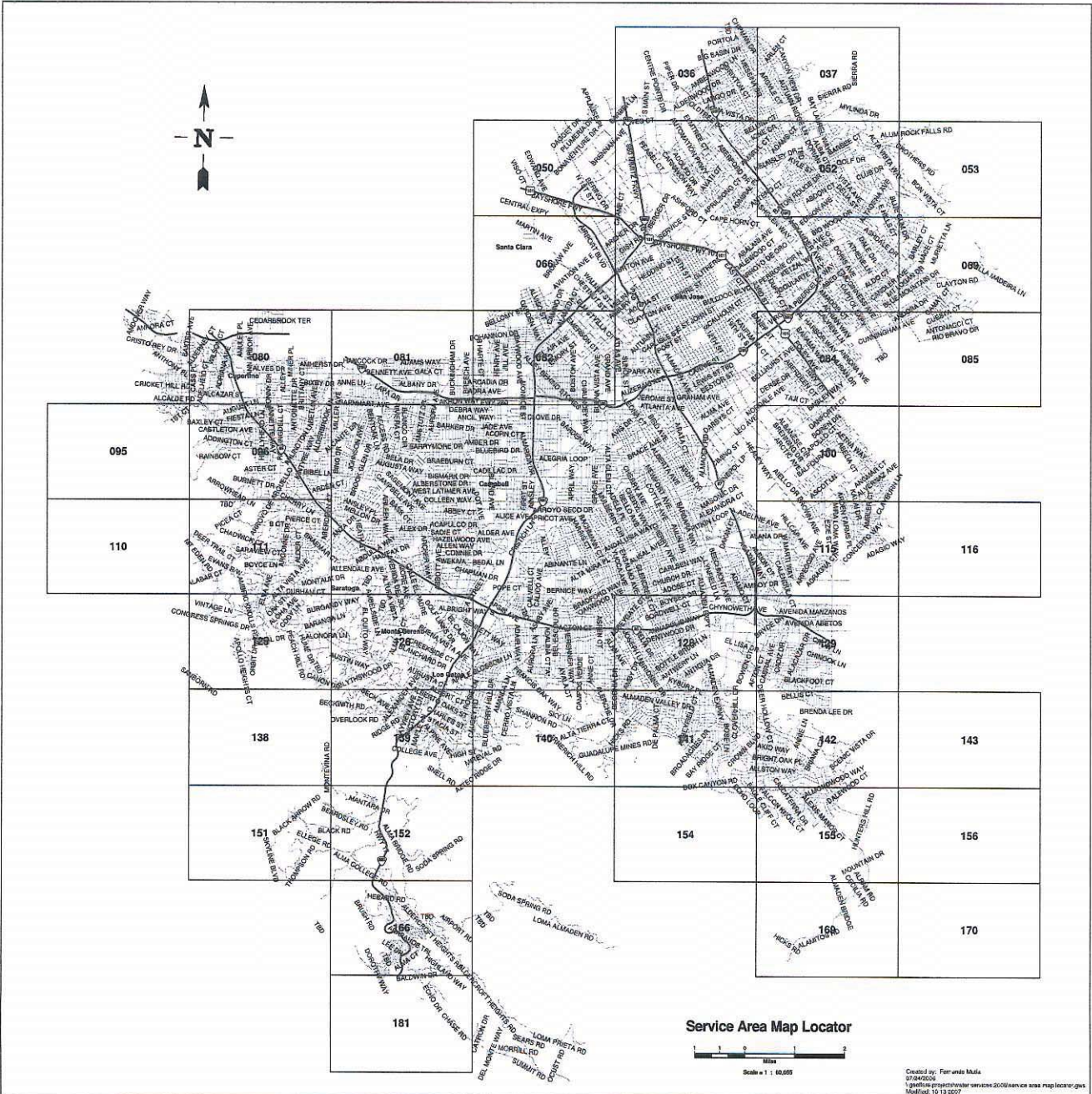
Dec. No. _____

Director, Regulatory Affairs

Effective NOV 16 2006

Resolution No. _____

TITLE



SERVICE AREA MAP LOCATOR

INDEX

The following list show the cadastral map number, advice letter number and date of filing for all service area maps filed with the California Public Utilities Commission. These maps are under separate cover and this index is for control and reference purposes.

<u>Map Number</u>	<u>Advice Letter Number</u>	<u>Date of Filing</u>	
36	194	December 31, 1986	
37	269	April 28, 1994	
50	194	December 31, 1985	
52	270	May 18, 1994	
53	291	September 10, 1997	
66	194	December 31, 1986	
69	295	October 29, 1997	
80	194	December 31, 1986	
81	194	December 31, 1986	
82	194	December 31, 1986	
85	199	June 5, 1987	
95	271	December 19, 1994	
96	284	March 14, 1997	
100	205	December 4, 1987	
110	215	December 15, 1988	
111	203	August 28, 1987	
115	205	December 4, 1987	
116	205	December 4, 1987	
125	347	April 26, 2004	
126	259	October 22, 1993	
128	205	December 4, 1987	
129	205	December 4, 1987	
138	259	October 22, 1993	
139	317	June 25, 1999	
140	316	June 3, 1999	
141	283	January 31, 1997	
142	288	June 17, 1997	
143	210	June 9, 1988	
151	215	December 15, 1988	
152	322	May 17, 2000	
154	215	December 15, 1988	
155	279	August 15, 1996	(T)
156	210	June 9, 1988	
166	369	August 25, 2006	
169	210	June 9, 1988	
181	369	August 25, 2006	

(To be inserted by utility)

Issued By

(To be inserted by Cal. P.U.C.)

Advice Letter No.: 625

Margaret McWilliams
NAME

Date Filed: 05/07/2026

Effective Date: 06/17/2026

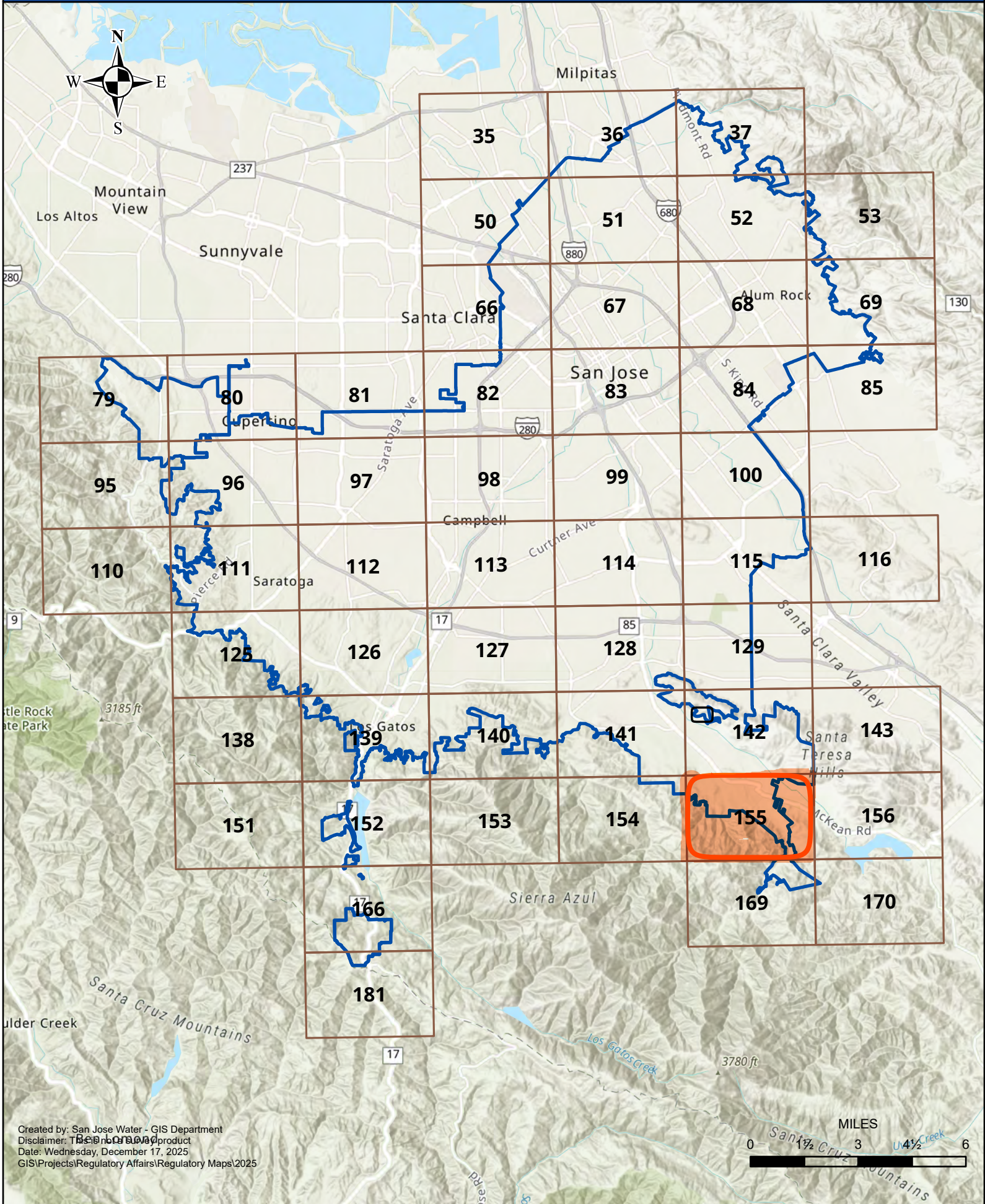
Decision No.: _____

Director of Regulatory Affairs
TITLE

Resolution No.: _____

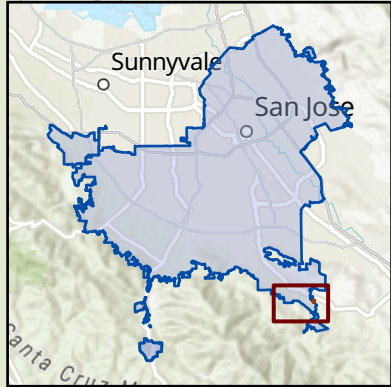
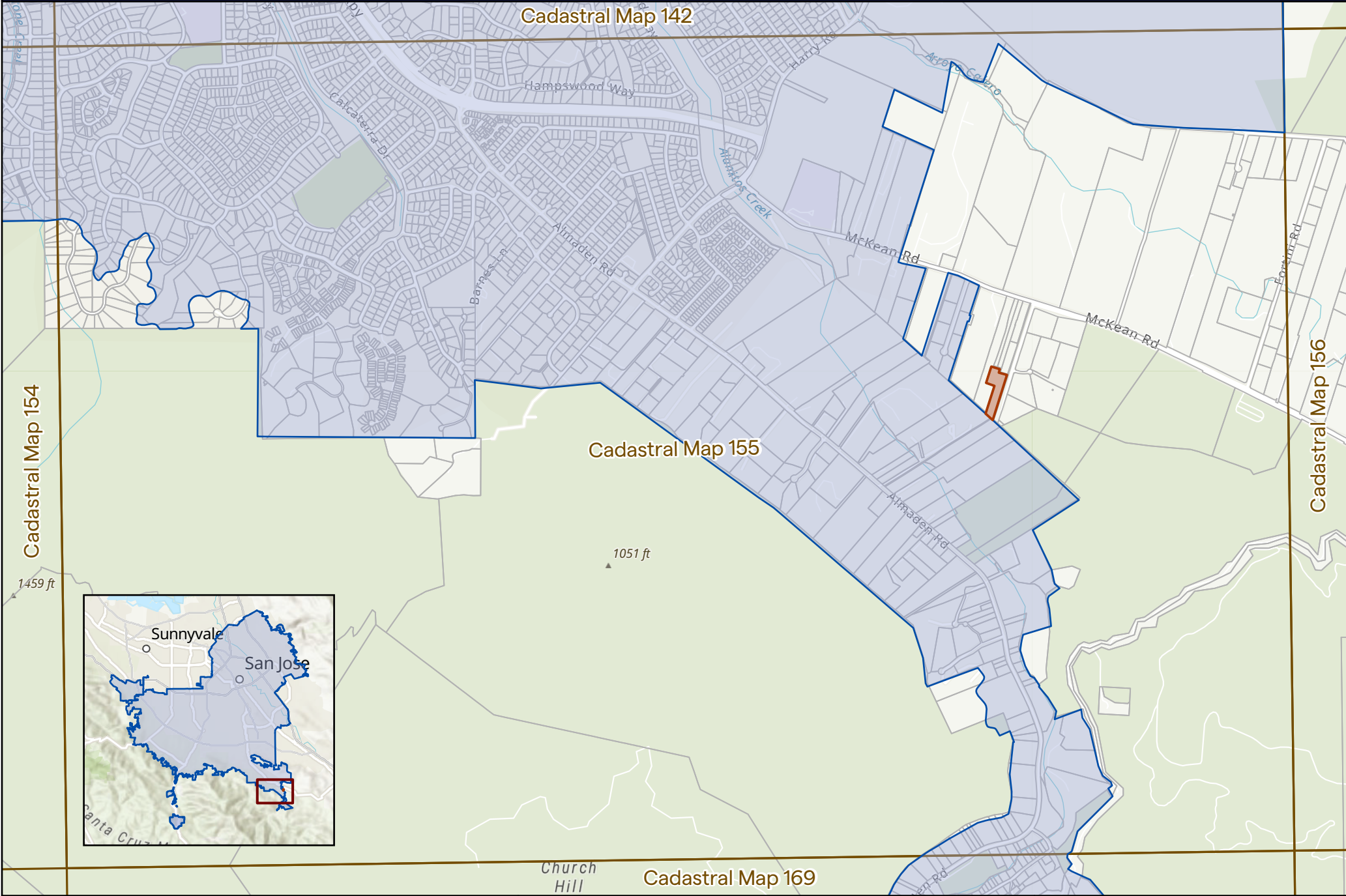


SERVICE AREA MAP LOCATOR

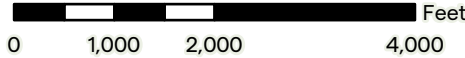




SAN JOSE WATER SERVICE AREA



- Indicates Area to be Removed
- Cadastral Map Grid
- Indicates Existing Service Area
- Parcel Boundary



Created By: H2O America - GIS Department
 Date: Monday, March 30, 2026
 Disclaimer: This is not a survey product