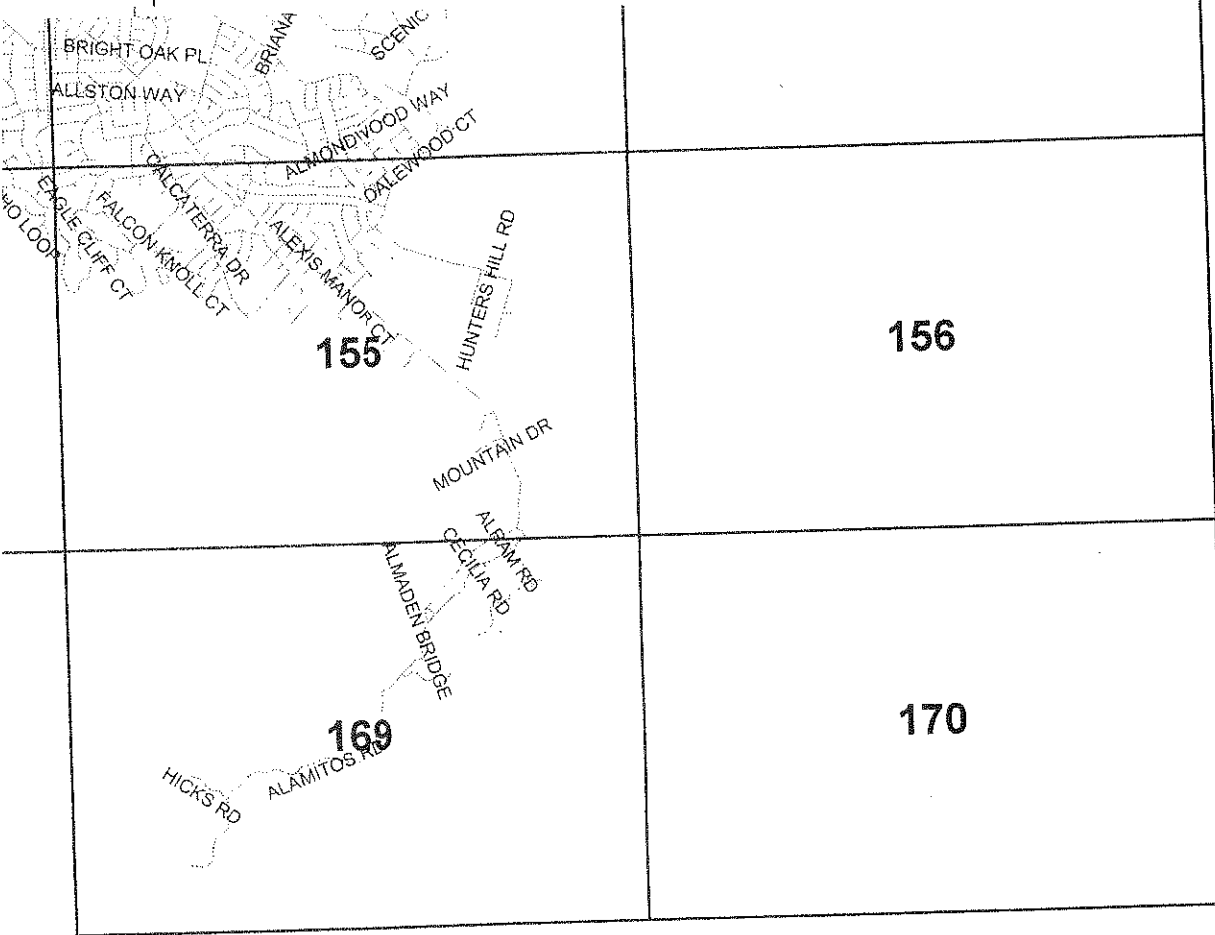


SAN JOSE WATER COMPANY

SERVICE AREA MAP LOCATOR



Area Map Locator



Scale = 1 : 60,055

ADVICE LETTER
NUMBER 371
October 16, 2006

Created by: Fernando Mutia
07/24/2006
\\geoflare\projects\water services\2006\service area map locator.gws
Modified: 10/13/2007

Advice No. 371

Palle Jensen

Date Filed OCT 17 2006

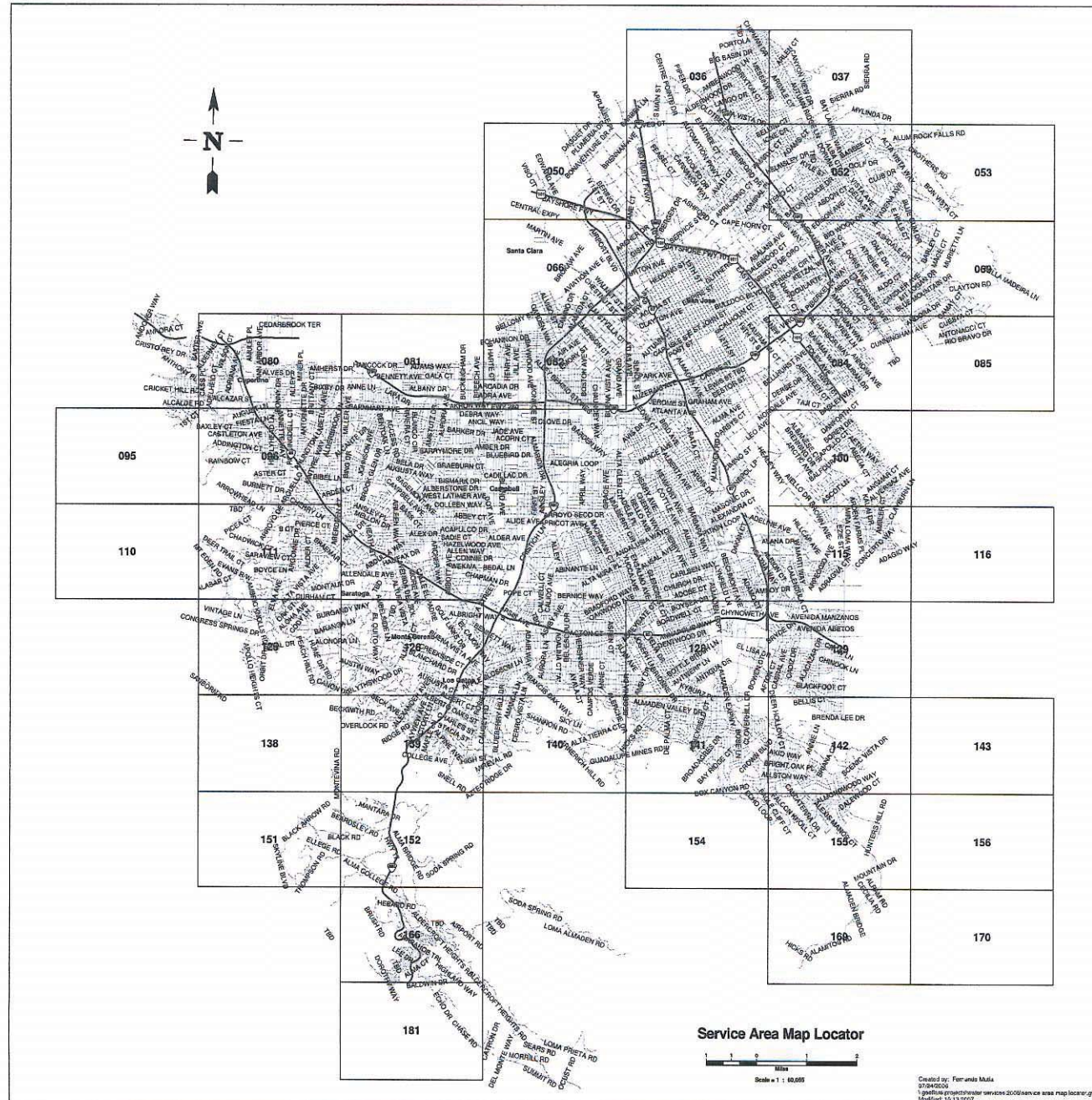
Effective NOV 16 2006

Dec. No. _____

Director, Regulatory Affairs

Resolution No. _____

TITLE



SERVICE AREA MAP LOCATOR

INDEX

The following list shows the cadastral map number, advice letter number and date of filing for all service area maps filed with the California Public Utilities Commission. These maps are under separate cover, and this index is for control and reference purposes.

<u>Map Number</u>	<u>Advice Letter Number</u>	<u>Date of Filing</u>	
36	194	December 31, 1986	
37	600	September 26, 2023	(T)
50	194	December 31, 1986	
52	270	May 18, 1994	
53	291	September 10, 1997	
66	194	December 31, 1986	
69	295	October 29, 1997	
80	194	December 31, 1986	
81	194	December 31, 1986	
82	194	December 31, 1986	
84	199	June 5, 1987	
85	445	December 7, 2012	
95	271	December 19, 1994	
96	557	December 18, 2020	
100	205	December 4, 1987	
110	215	December 15, 1988	
111	203	August 28, 1987	
115	205	December 4, 1987	
116	205	December 4, 1987	
125	347	April 26, 2004	
126	259	October 22, 1993	
128	205	December 4, 1987	
129	205	December 4, 1987	
138	259	October 22, 1993	
139	458	March 27, 2014	
140	316	June 3, 1999	
141	283	January 31, 1997	
142	288	July 17, 1997 June	
143	210	9, 1988 December	
151	215	15, 1988 August 26,	
152	451	2013 December 15,	
154	215	1988 August 15,	
155	279	1996 June 9, 1988	
156	210	September 27, 2013	
166	451	June 9, 1988	
169	210	August 25, 2006	
181	369		

(To be inserted by utility)

Issued by

(To be inserted by Cal. P.U.C.)

Advice No. 600

JOHN TANG

Date Filed 09/27/2023

Dec. No. 99-10-064

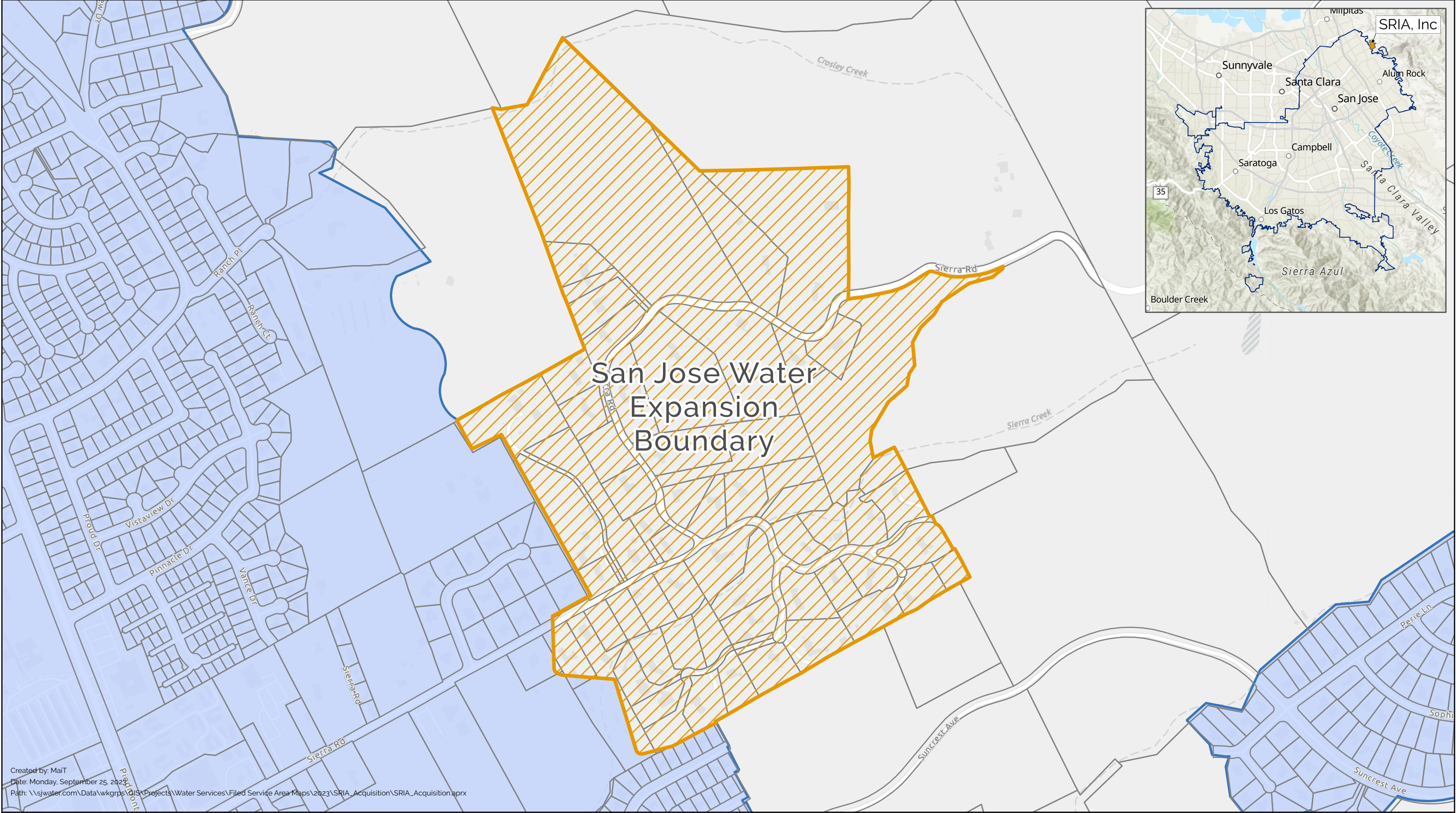
Vice President,
Regulatory Affairs

Effective 12/22/2023

Resolution No. _____

TITLE

San Jose Water - Sierra Road Improvement Association, Inc. Acquisition



Created by: MaiT
Date: Monday, September 25, 2023
Path: \\sjwater.com\Data\wkgrps\GIS\Projects\Water Services\Filed Service Area Maps\2023\SRIA_Acquisition\SRIA_Acquisition.aprx

Service Area To File Service Area Santa Clara County Parcel

